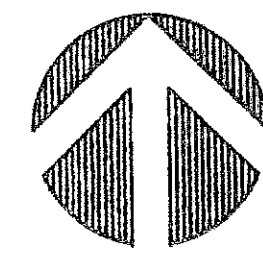
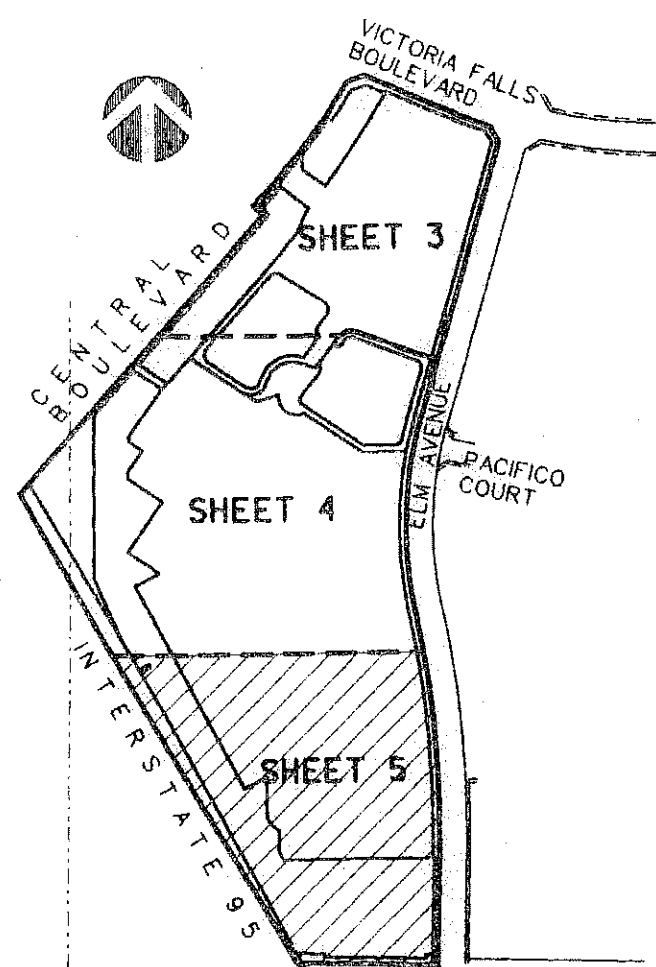


PERIMETER

SURVEYING & MAPPING
 Certificate of Authorization No. LB7264
 Prepared by: Jeff S. Hodapp, P.S.M.
 951 Broken Sound Parkway, Suite 320
 Boca Raton, Florida 33487
 Tel: (561) 241-9988
 Fax: (561) 241-5182



GRAPHIC SCALE
 1" = 50'



KEY MAP
 NOT TO SCALE

LEGEND:

- ⊙ SET P.R.M. (UNLESS OTHERWISE NOTED) 4" X 4" CONC. MON. WITH ALUMINUM DISK STAMPED P.R.M. #LB7264
- SET P.C.P. #LB7264 CENTERLINE

ABBREVIATIONS:

- CH CHORD
- CHB CHORD BEARING
- CONC. CONCRETE
- COR. CORNER
- D DELTA (CENTRAL ANGLE)
- D.E. DRAINAGE EASEMENT
- L ARCLength
- L.B. LICENSED BUSINESS
- L.E. LANDSCAPE EASEMENT
- L.S. LICENSED SURVEYOR
- L.S.E. LIFT STATION EASEMENT
- MON. MONUMENT
- O.R.B. OFFICIAL RECORDS BOOK
- N.P.B.C.I.D. NORTHERN PALM BEACH COUNTY IMPROVEMENT DISTRICT
- N.R. NON-RADIAL
- P.A.E. PEDESTRIAN ACCESS EASEMENT
- P.B. PLAT BOOK
- P.B.C.R. PALM BEACH COUNTY RECORDS
- PG. PAGE
- P.C.P. PERMANENT CONTROL POINT
- P.O.B. POINT OF BEGINNING
- P.O.C. POINT OF COMMENCEMENT
- P.R.M. PERMANENT REFERENCE MONUMENT
- P.S.M. PROFESSIONAL SURVEYOR & MAPPER
- P.U.D. PLANNED UNIT DEVELOPMENT
- R RADIUS
- R.E.E. ROOF ENCROACHMENT EASEMENT
- R/W RIGHT-OF-WAY
- S.E. SIDEWALK EASEMENT
- SEC. SECTION
- S.F. SQUARE FEET
- SLE SEWER LINE EASEMENT
- U.E. UTILITY EASEMENT
- W.L.E. WATER LINE EASEMENT
- W.M.E. WATER MANAGEMENT EASEMENT
- WMME WATER MANAGEMENT EASEMENT
- WMAE WATER MANAGEMENT ACCESS EASEMENT

CIMARRON COVE

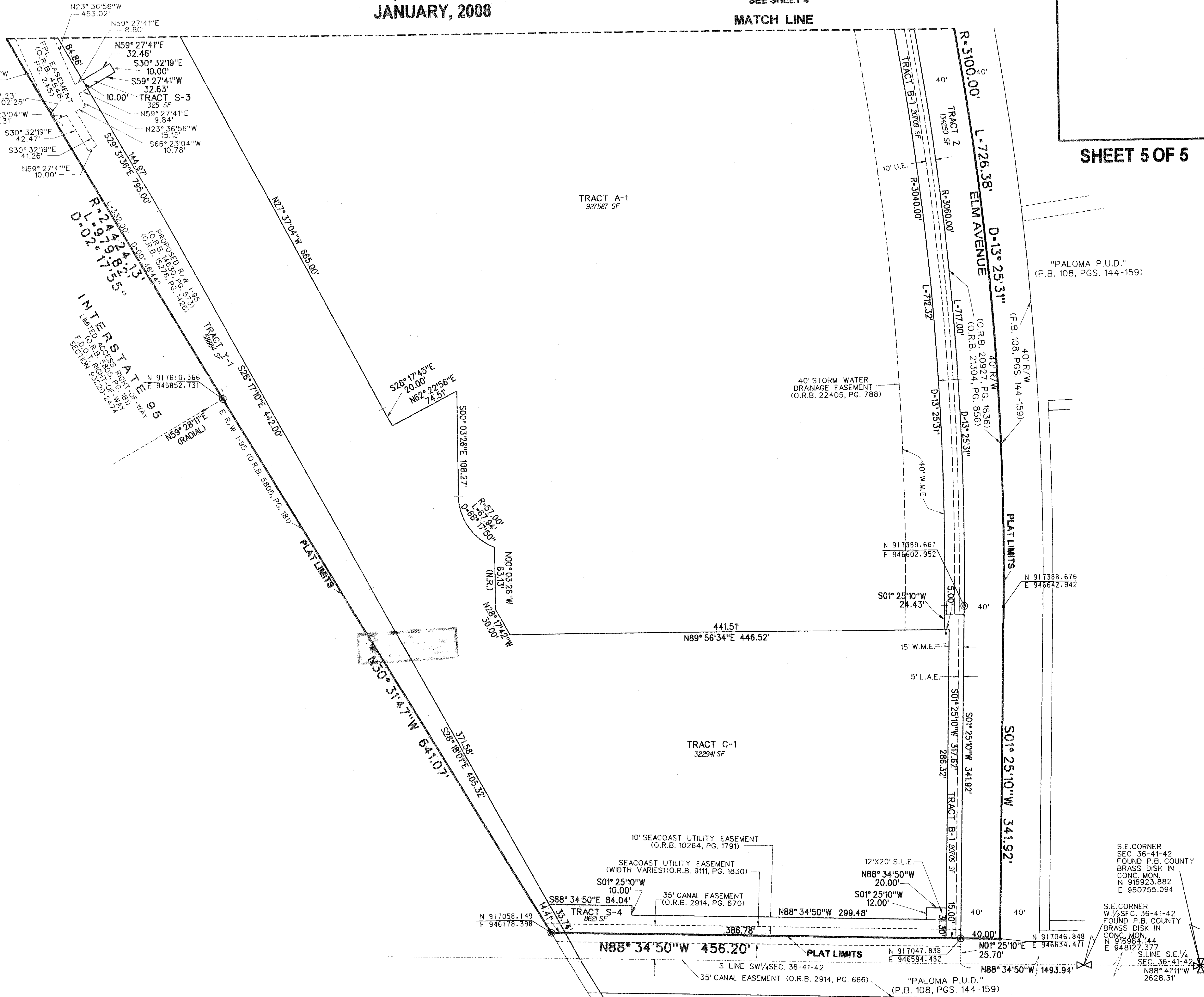
A PORTION OF THE SOUTHEAST ONE-QUARTER OF SECTION 35, AND THE WEST ONE-HALF OF SECTION 36, TOWNSHIP 41 SOUTH, RANGE 42 EAST, PALM BEACH GARDENS, PALM BEACH COUNTY, FLORIDA.

JANUARY, 2008

SEE SHEET 4

MATCH LINE

E LINE SW/4SEC. 35-41-42
 W LINE SW/4SEC. 36-41-42



106

SHEET 5 OF 5

"PALOMA P.U.D."
 (P.B. 108, PGS. 144-159)

S.E. CORNER
 SEC. 36-41-42
 FOUND P.B. COUNTY
 BRASS DISK IN
 CONC. MON.
 N 916923.882
 E 850755.094

S.E. CORNER
 W/4 SEC. 36-41-42
 FOUND P.B. COUNTY
 BRASS DISK IN
 CONC. MON.
 N 916984.144
 E 948127.577
 S LINE S.E. 1/4
 SEC. 36-41-42
 N88° 41'11"W
 2628.31'

"PALOMA P.U.D."
 (P.B. 108, PGS. 144-159)